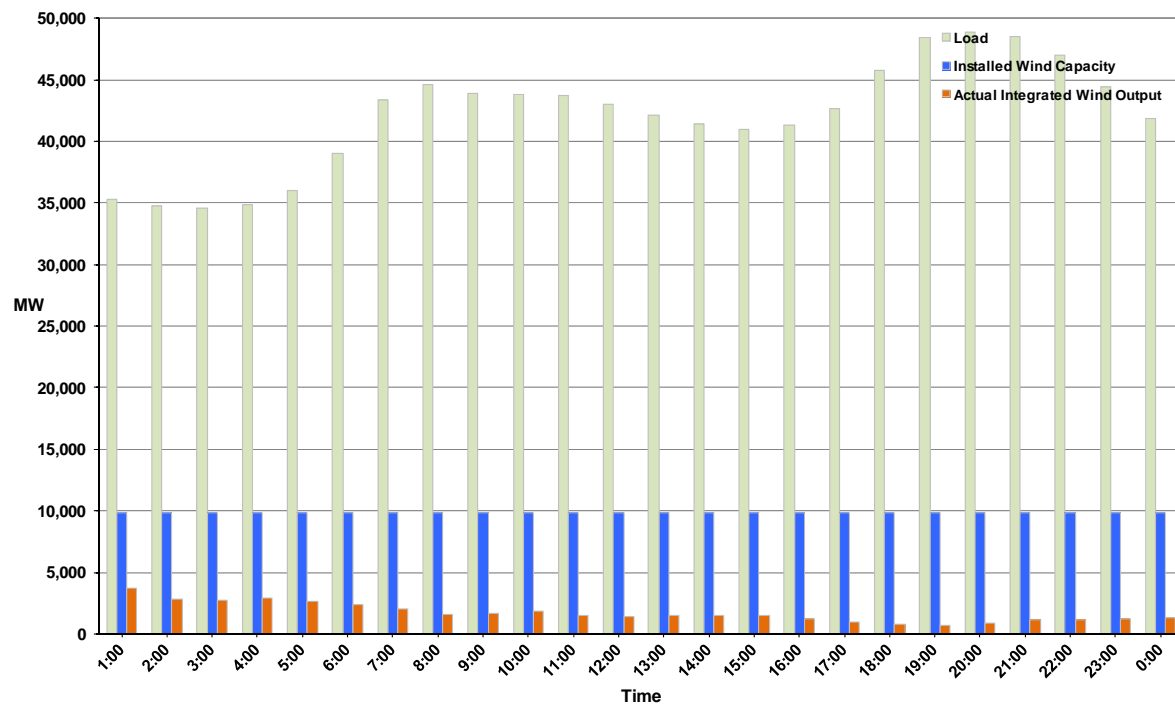




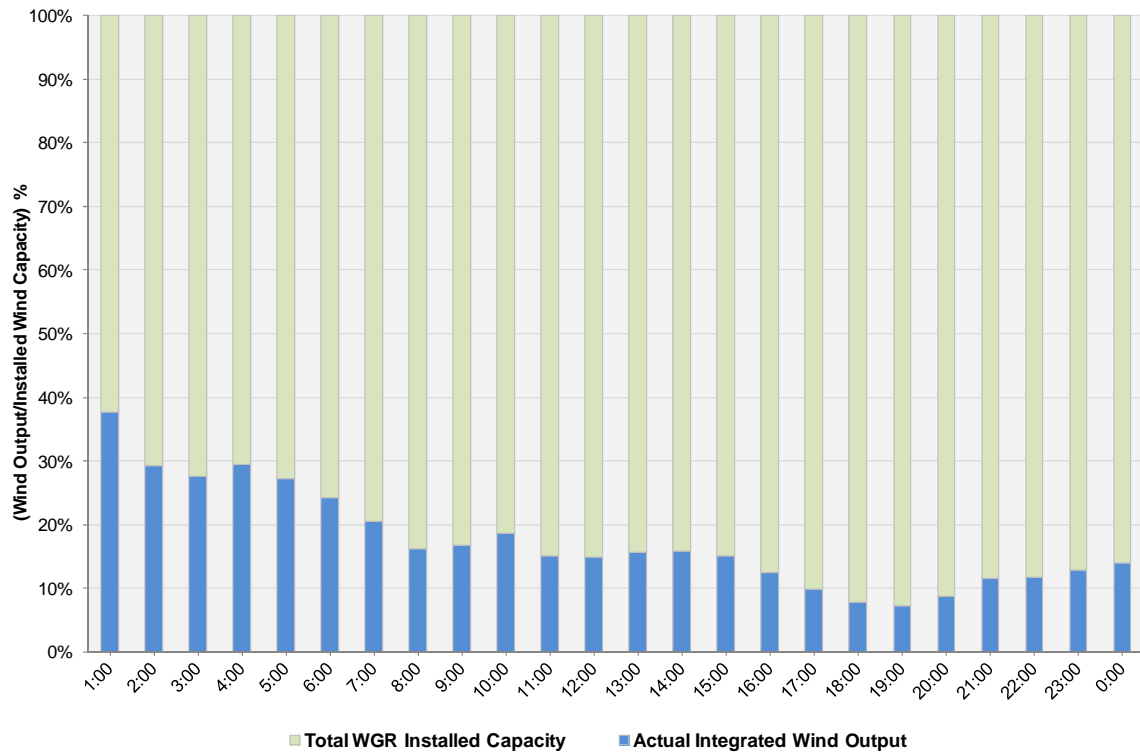
## ERCOT Grid Operations Wind Integration Report: 12/06/11

Peak Load	48,822 MW
Load Peak Hour	20
Wind over Peak	857 MW
Wind Record 10/07/11	7,400 MW
Max Wind Value	3,988 MW
Wind Peak Time	00:00
Wind Integration %	11.09%

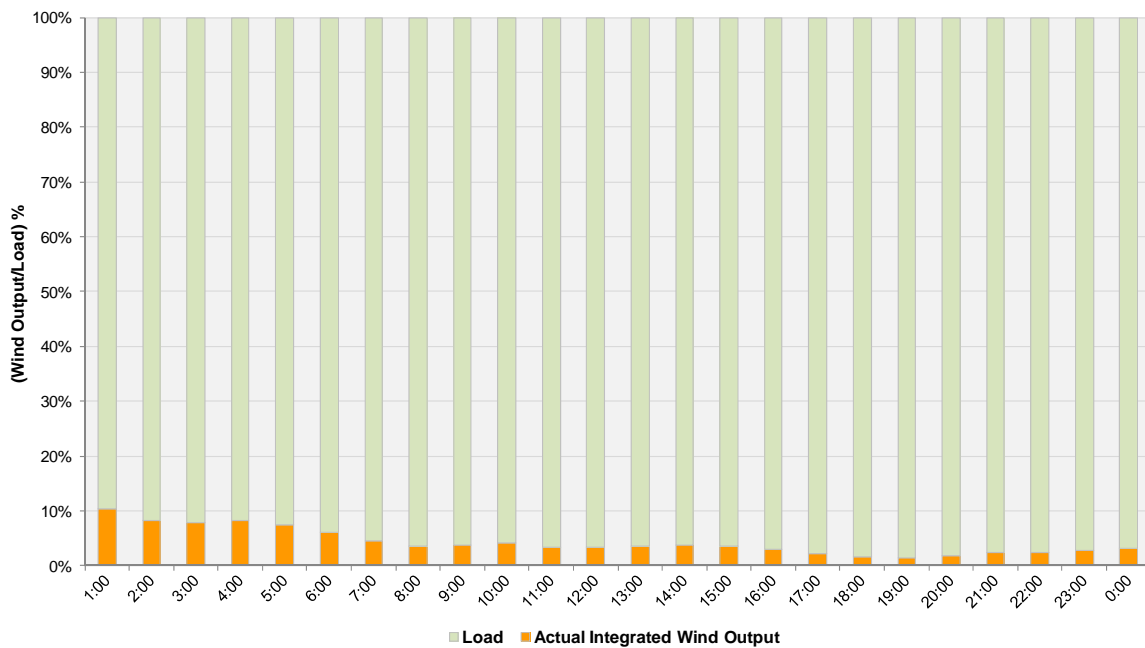
Hourly Average Actual Load vs. Actual Wind Output  
12-06-2011



**Actual Wind Output as a Percentage of the Total Installed Wind Capacity**  
**12-06-2011**



**Actual Wind Output as a Percentage of the ERCOT Load**  
**12-06-2011**



ERCOT Load vs. Actual Wind Output 11/29/2011 - 12/6/2011

